

# CERTIFICATE OF LOCATION OF GOVERNMENT CORNER

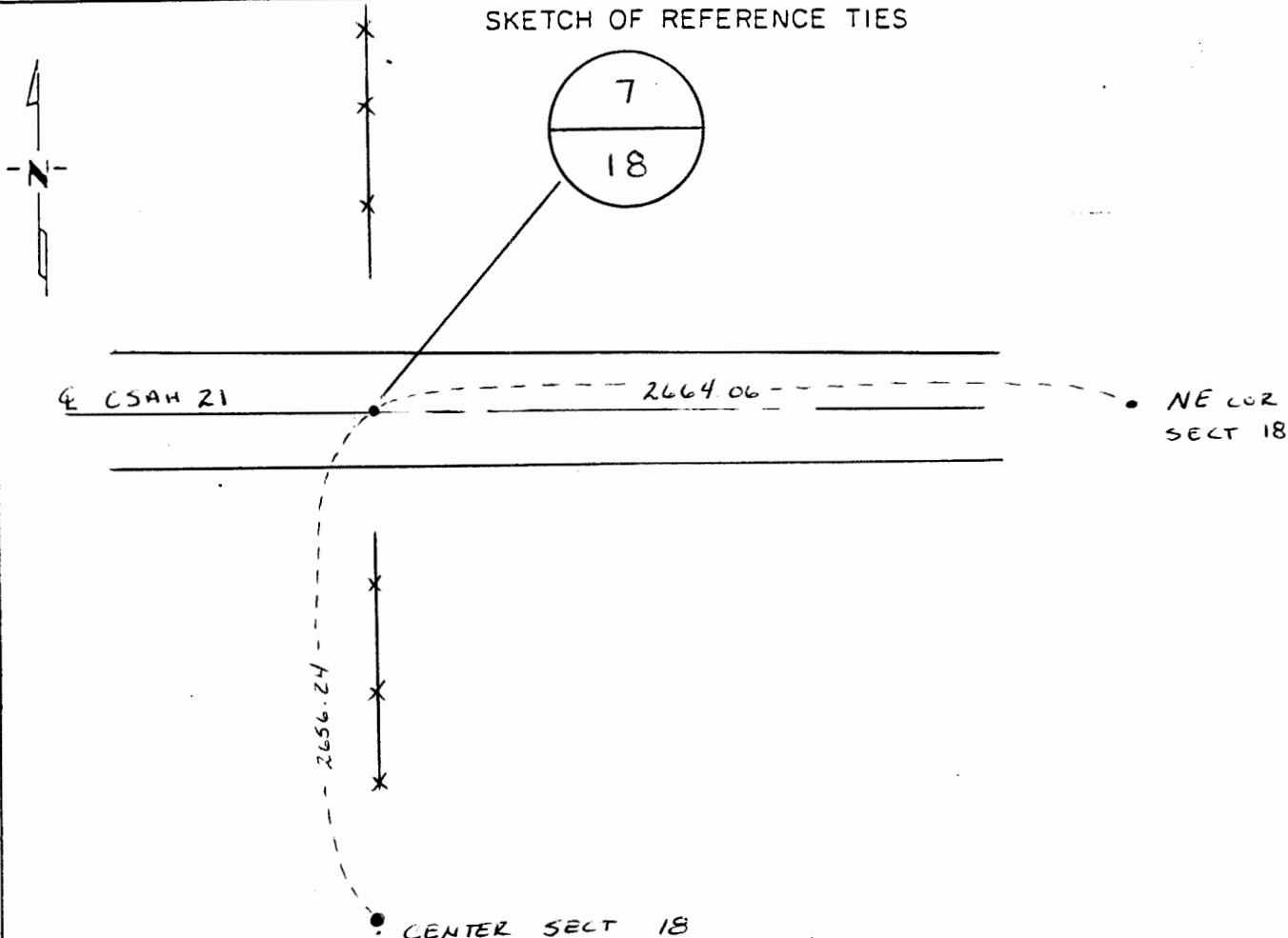
N 1/4 Corner of Section 18, Township 108N, Range 40W, 5<sup>TH</sup> P.M.

STATE OF MINNESOTA, County of MURRAY

At the corner location shown on the sketch:

- On 10/24/91 found a NAIL AT SURFACE  
DATE
- left monument as found,  lowered monument,  removed monument (explain)
- On \_\_\_\_\_ placed a \_\_\_\_\_  
DATE

SKETCH OF REFERENCE TIES



AG-LAND ENGINEERING RUTHTON, MN

Statement of evidence relative to this corner location is on back of page.

I hereby certify that this document and the data contained herein was prepared by me or under my direct supervision.

C. M. Engquist 11-3-91  
SIGNATURE DATE

Registration No. 2400

- Land Surveyor,  Professional Engineer
- County Surveyor,  County Engineer

OFFICE OF THE COUNTY RECORDER  
 County of MURRAY

I hereby certify that this document was filed in the Co. Recorders office at \_\_\_\_\_ M. on the \_\_\_\_\_ day of \_\_\_\_\_ A.D., 19\_\_

County Recorder James V. Johnson  
 By NOV 7 1891, Deputy

DOCUMENT NO. \_\_\_\_\_